

Project Profile:

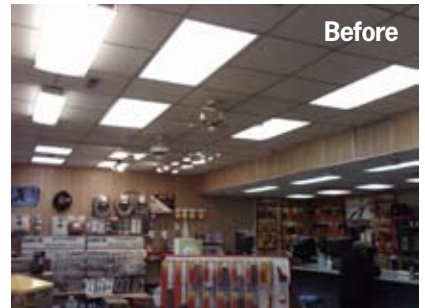
Loeb Electric Worthington Store



After



During



Before

Project Background

Loeb Electric's GreenPath™ sustainability program was created to target all facets of our business in search of resource-wasteful operations and behaviors. We addressed the lighting at our branches and decided to remodel all of our stores to support this sustainable program. Our goals were twofold: Provide a clean, bright environment to enhance customer service and to retrofit our lighting system and save energy.

Road to Improvement

Like many leased buildings, ours had old, inefficient lighting. After talking with the building's owner, we decided to take advantage of existing incentives and install energy saving lighting in other areas of the building.

Our first order of business was to get rid of the T12 fixtures. (See "Top 5 Energy Hogs in Offices".) For general purpose lighting, we installed Phillip's Daybrite T5 Soft Trace fixtures outfitted with F54 HO lamps. The new system produced more light while using 65% less energy to provide a bright, professional appearance to the new space.

Customer service and client satisfaction are paramount to us. To highlight products and displays we installed

Columbia wall washers with GE F39/40 BX lamps around the perimeter. This created a brighter space and made it easier for customers to find the products they need.

We also retrofit existing fluorescent exit signs with Lightolier LED versions that use 95% less energy, have a longer lifespan, and require less maintenance. In addition, we installed Wattstopper occupancy sensors in the seldom used office and restroom areas to control the lights and fans, ensuring efficiency when the spaces are unoccupied.

Finally, we installed a vinyl curtain on the overhead door in the warehouse to save the cost of re-heating or re-cooling the space during the winter or summer. The installation of the curtain has created a more comfortable environment for our associates, while maximizing our energy savings.

Loeb Electric's renovated Worthington store is another step in our GreenPath™ program to help the company reduce its environmental footprint. Overall, the new lighting system is 60% more efficient, providing \$2,099 in operational cost savings to the store.

Project Statistics

Overall:

- 2.8 yr payback
- 39% 10 yr avg ROI
- \$17,209 savings over 10 yrs (adjusted to Net Present Value)
- \$2,099 in AEP incentives
- total cost: \$6,847 after rebates
- % energy reduction: 60%
- avg annual savings: \$2,673

These are the **green** products we used to put Energy Hogs out to pasture.



T5 Soft Trace 2 x 4 Fixtures

PHILIPS
Day-Brite

This Philip's Day-Brite fixture provide a streamline design with excellent performance for the environmentally conscious user. Since we installed these in the ceiling of our retail area we've had many customers ask about them!

LED Exit Light

LIGHTOLIER

If you want to save energy, replacing old exit and emergency fixtures is a no-brainer. These Lightolier fixtures use 95% less energy than an incandescent sign! We did the math on these when they're lit 24/7 and it was an easy choice.



Fans

BROAN

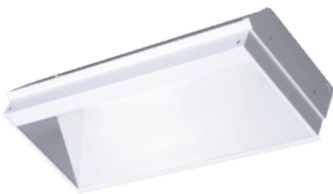
These Broan Fans reduce energy use up to 65% with their high efficiency motors. Not only that, but the reduced "white noise" in our restrooms helps lessen the overall noise level that can stress our associates and customers alike.



Occupancy Sensors

WattStopper

Occupancy sensors can cut lighting energy use up to 50% in some areas - and these Wattstopper sensors are built for the long haul. There's a reason that we picked WattStopper over everyone else. You'll see why.



Wall Washers

Columbia
LIGHTING

These Columbia wall washers are versatile, economical fixtures that direct light towards vertical surfaces and create great highlight areas. These beauties are a favorite of ours because they create a nice space and make some of our products look gorgeous.



T5 Wall Washer Lamps



When it comes to quality the GE name just about says it all. Sure these T5 lamps use less energy than T12s and put out a lot more light, but their quality also means we can count on them lighting up and creating a great space every morning.

Call us at 614.294.6351 and we'll show you how you can save money, take advantage of AEP incentives and put more profits on your bottom line!

B r i g h t e n y o u r b o t t o m l i n e

 **Loeb Electric**